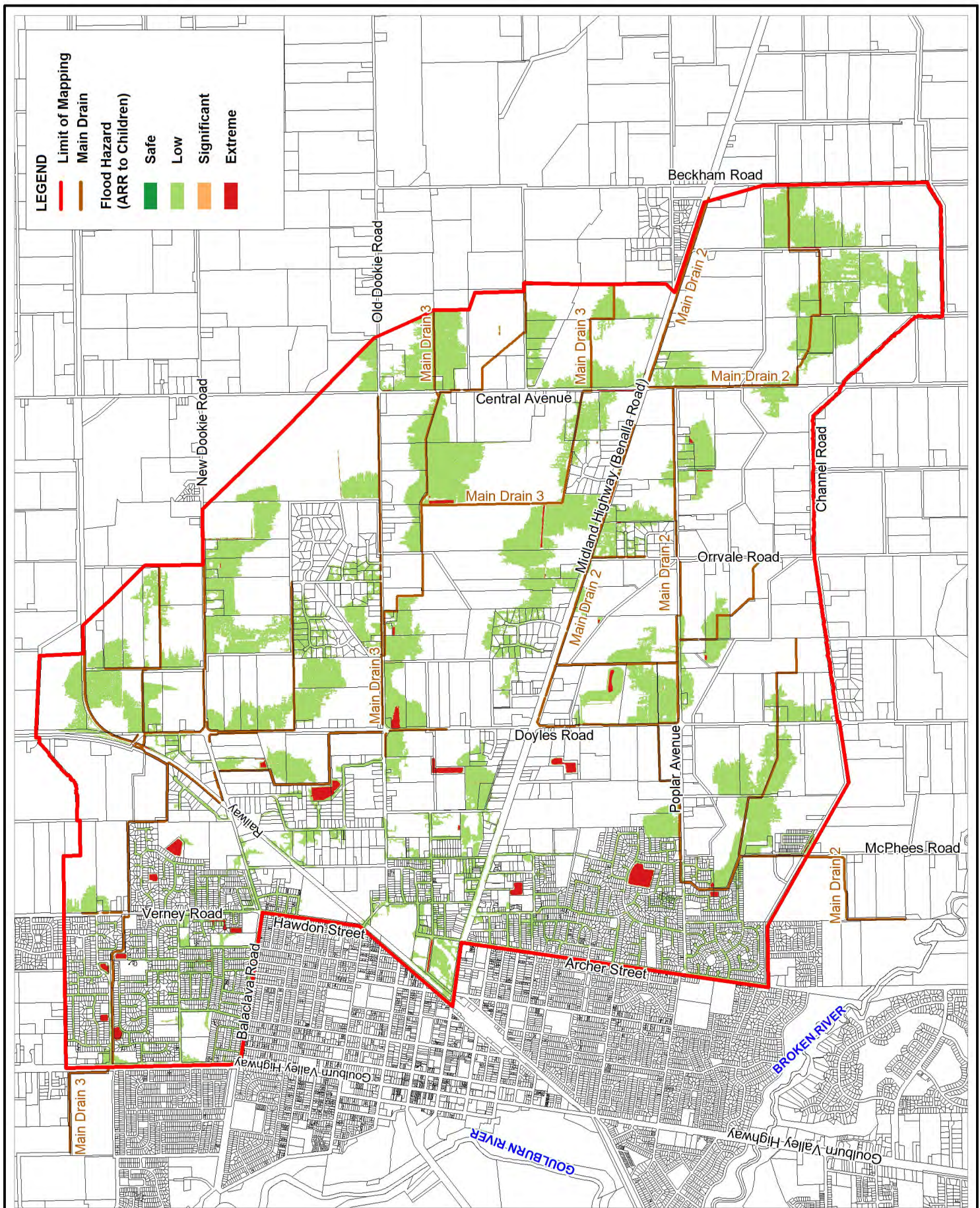


## Appendix G ARR Hazardous to Children

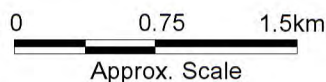


Title:  
**Shepparton East**  
**Existing Conditions 20% AEP Peak Flood Hazard**

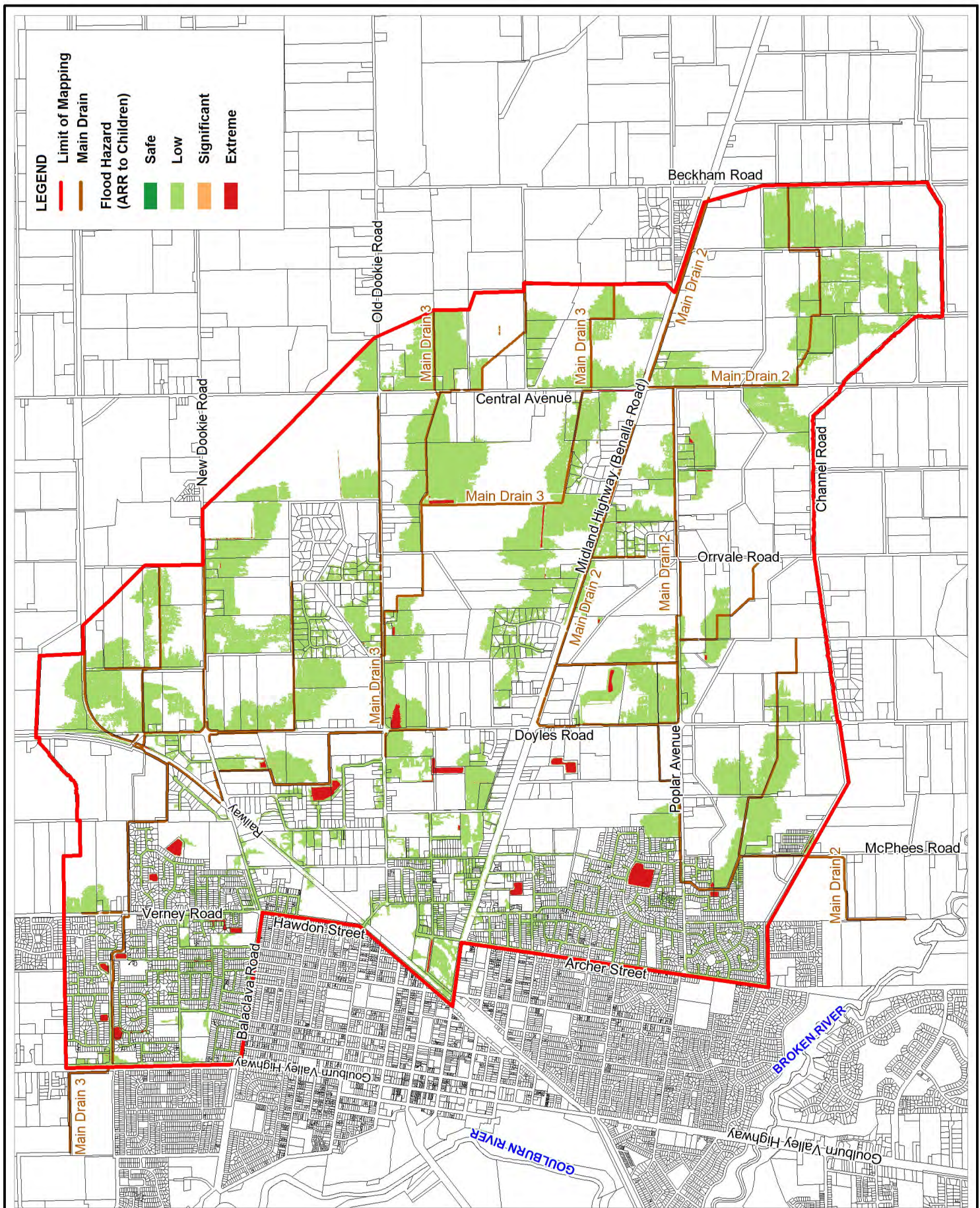
Figure:  
**G-1**

Rev:  
**A**

BMT WBM endeavours to ensure that the information provided in this map is correct at the time of publication. BMT WBM does not warrant, guarantee or make representations regarding the currency and accuracy of information contained in this map.



[www.bmtwbm.com.au](http://www.bmtwbm.com.au)

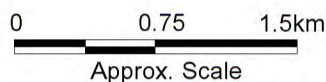


Title:  
**Shepparton East**  
**Existing Conditions 10% AEP Peak Flood Hazard**

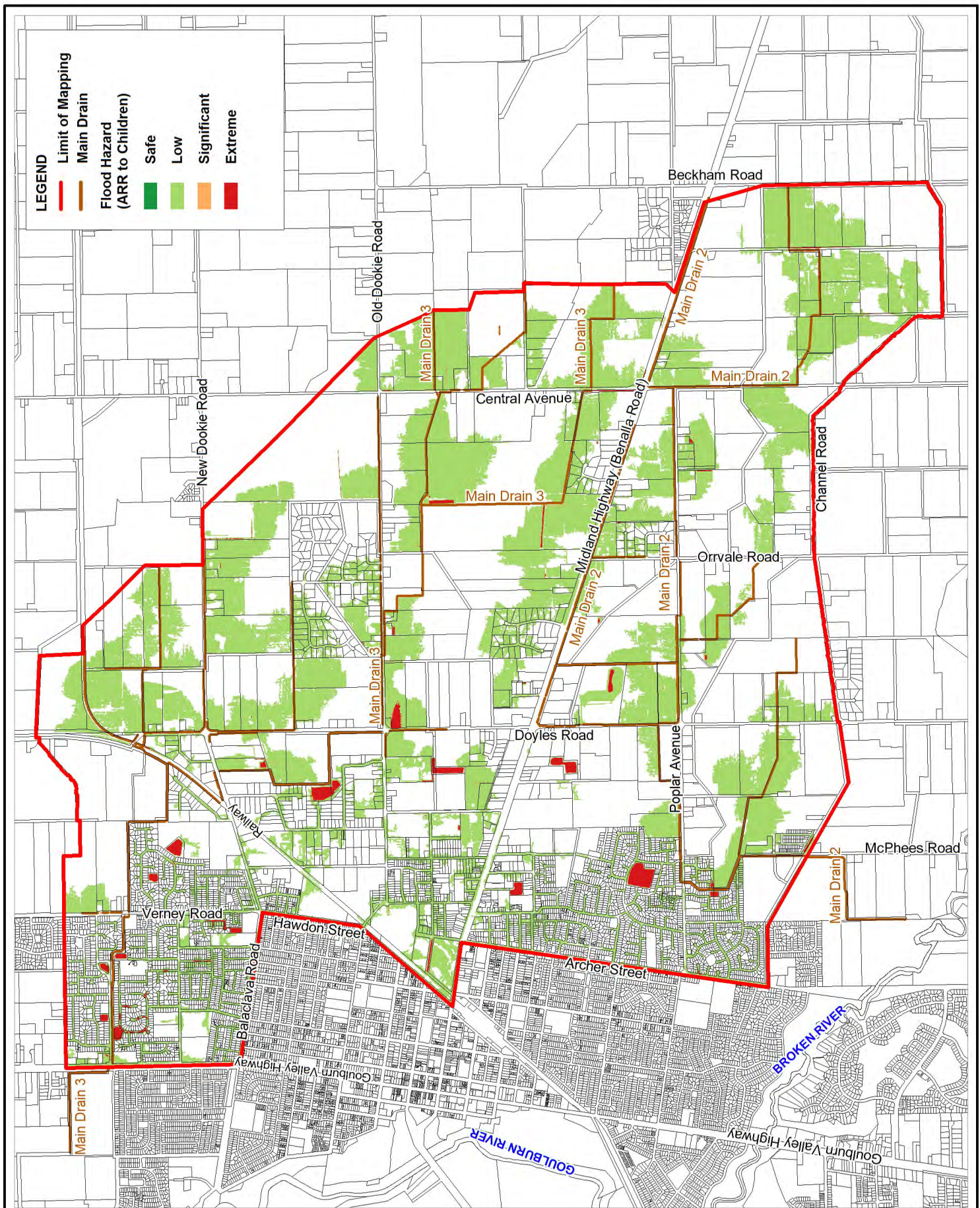
Figure:  
**G-2**

Rev:  
**A**

BMT WBM endeavours to ensure that the information provided in this map is correct at the time of publication. BMT WBM does not warrant, guarantee or make representations regarding the currency and accuracy of information contained in this map.



[www.bmtwbm.com.au](http://www.bmtwbm.com.au)

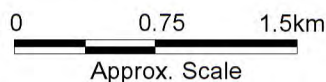


Title:  
**Shepparton East**  
**Existing Conditions 5% AEP Peak Flood Hazard**

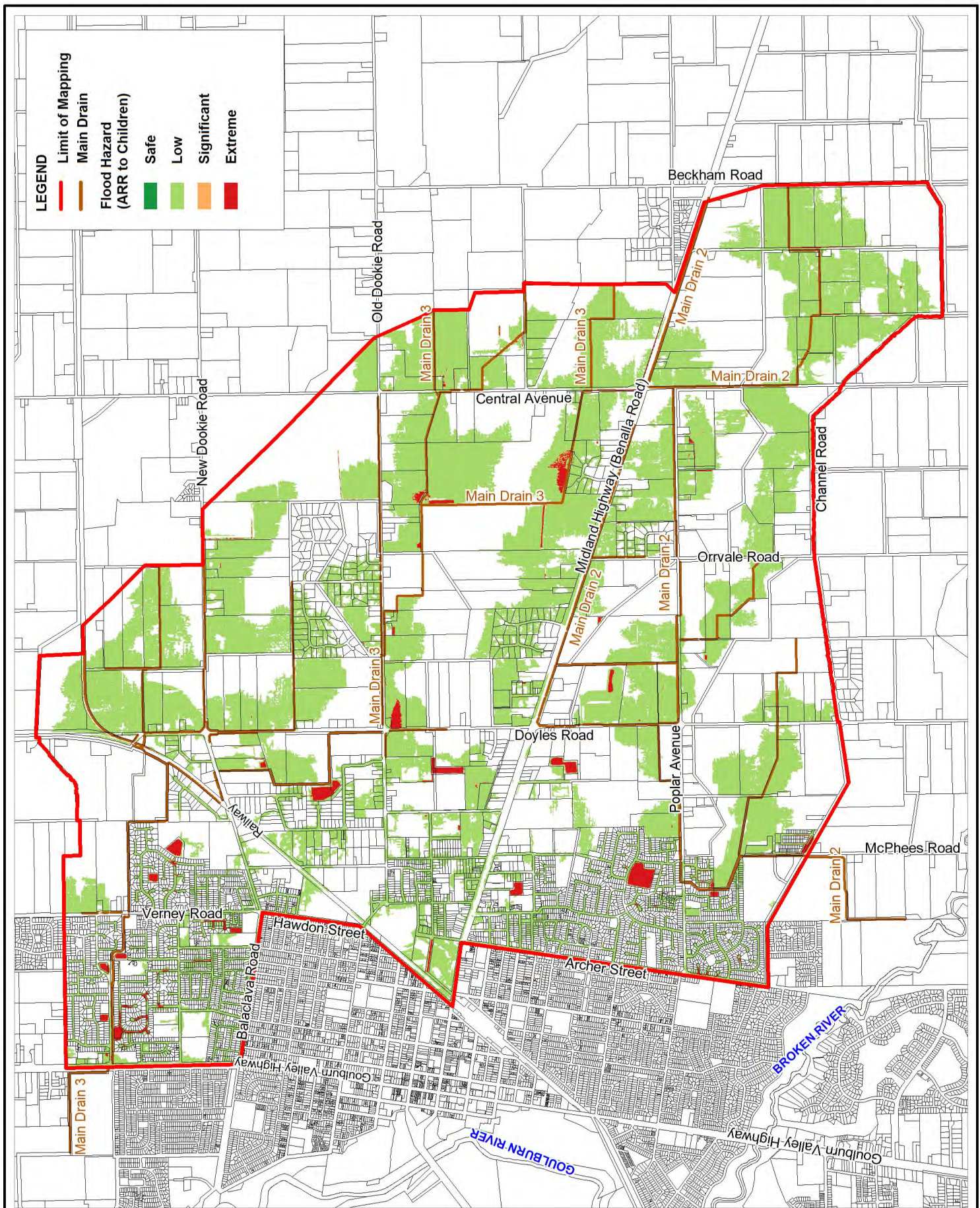
Figure:  
**G-3**

Rev:  
**A**

BMT WBM endeavours to ensure that the information provided in this map is correct at the time of publication. BMT WBM does not warrant, guarantee or make representations regarding the currency and accuracy of information contained in this map.



[www.bmtwbm.com.au](http://www.bmtwbm.com.au)

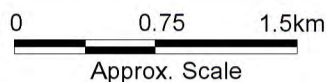


Title:  
**Shepparton East**  
**Existing Conditions 2% AEP Peak Flood Hazard**

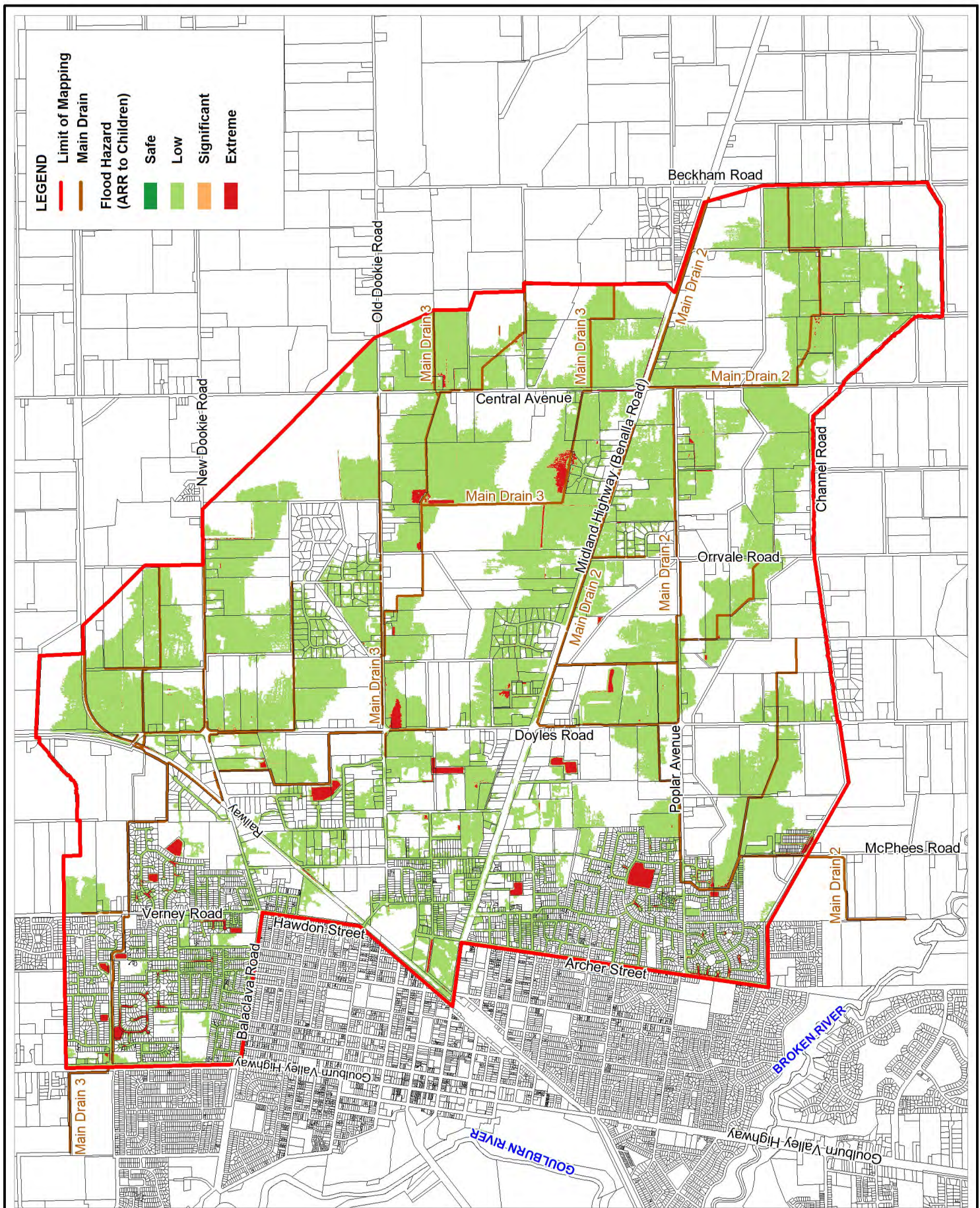
Figure:  
**G-4**

Rev:  
**A**

BMT WBM endeavours to ensure that the information provided in this map is correct at the time of publication. BMT WBM does not warrant, guarantee or make representations regarding the currency and accuracy of information contained in this map.



[www.bmtwbm.com.au](http://www.bmtwbm.com.au)

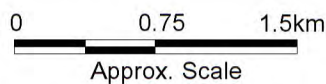


Title:  
**Shepparton East**  
**Existing Conditions 1% AEP Peak Flood Hazard**

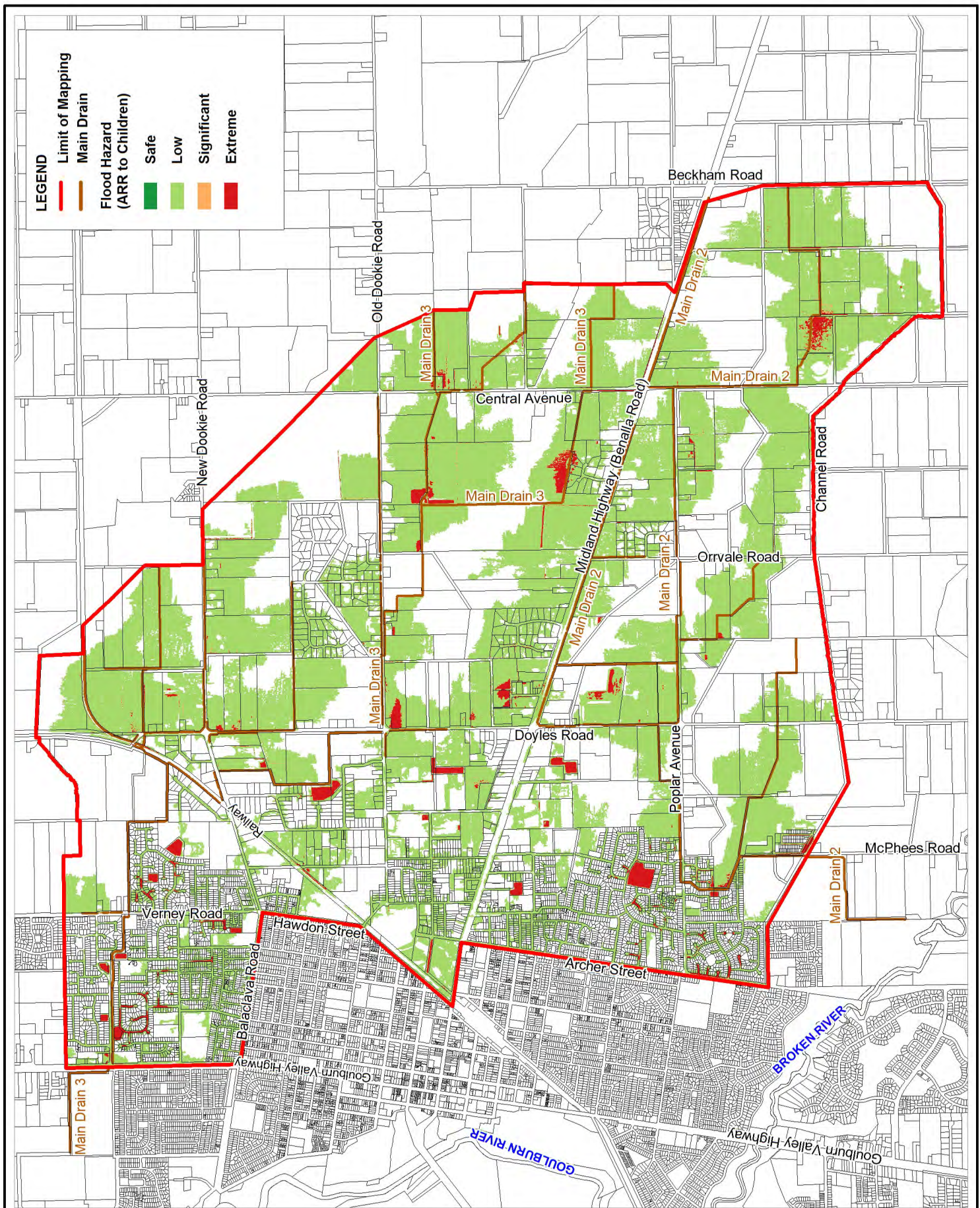
Figure:  
**G-5**

Rev:  
**A**

BMT WBM endeavours to ensure that the information provided in this map is correct at the time of publication. BMT WBM does not warrant, guarantee or make representations regarding the currency and accuracy of information contained in this map.



[www.bmtwbm.com.au](http://www.bmtwbm.com.au)

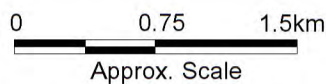


Title:  
**Shepparton East**  
**Existing Conditions 0.5% AEP Peak Flood Hazard**

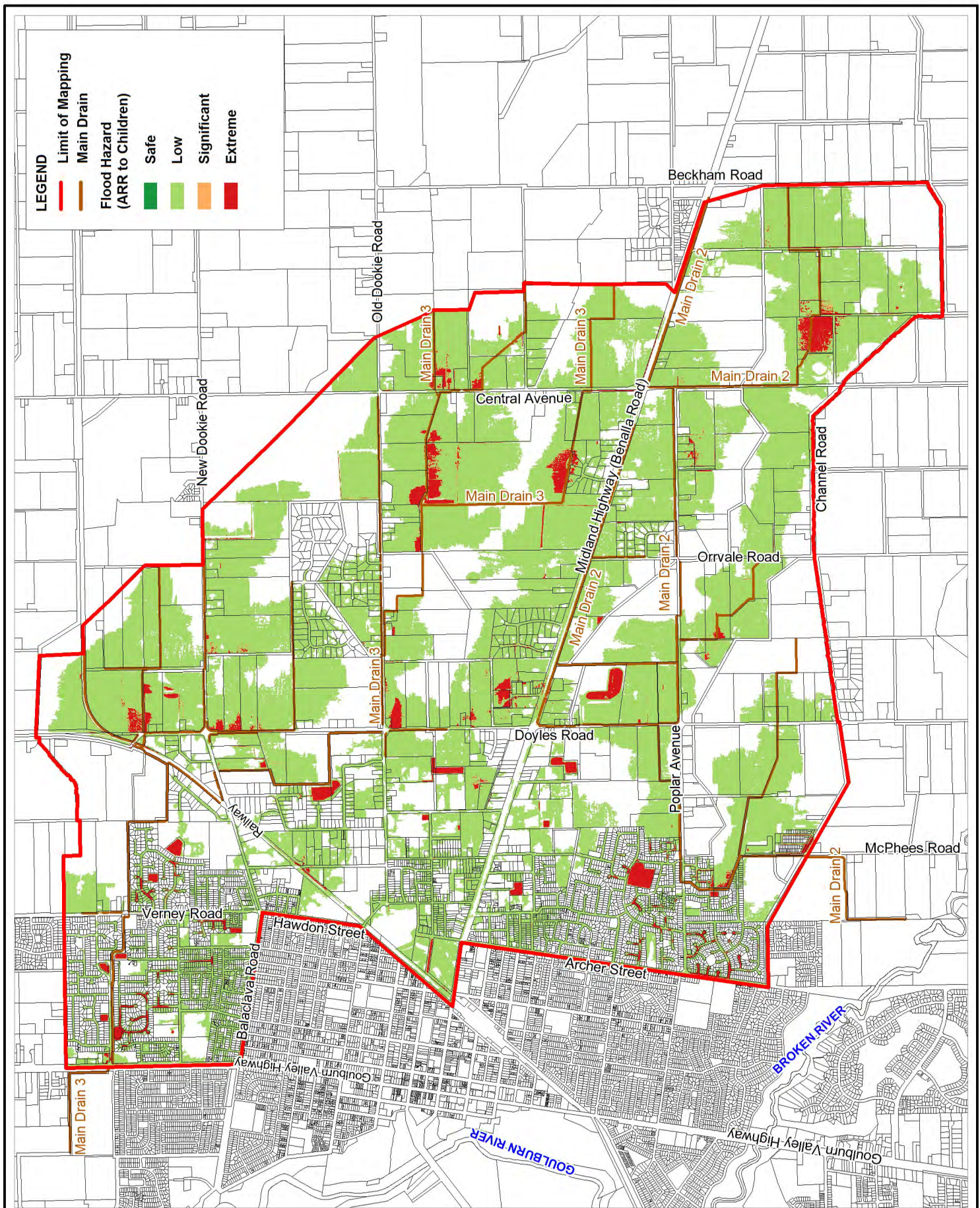
Figure:  
**G-6**

Rev:  
**A**

BMT WBM endeavours to ensure that the information provided in this map is correct at the time of publication. BMT WBM does not warrant, guarantee or make representations regarding the currency and accuracy of information contained in this map.



[www.bmtwbm.com.au](http://www.bmtwbm.com.au)

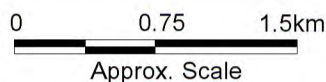


Title:  
**Shepparton East**  
**Existing Conditions 0.2% AEP Peak Flood Hazard**

Figure:  
**G-7**

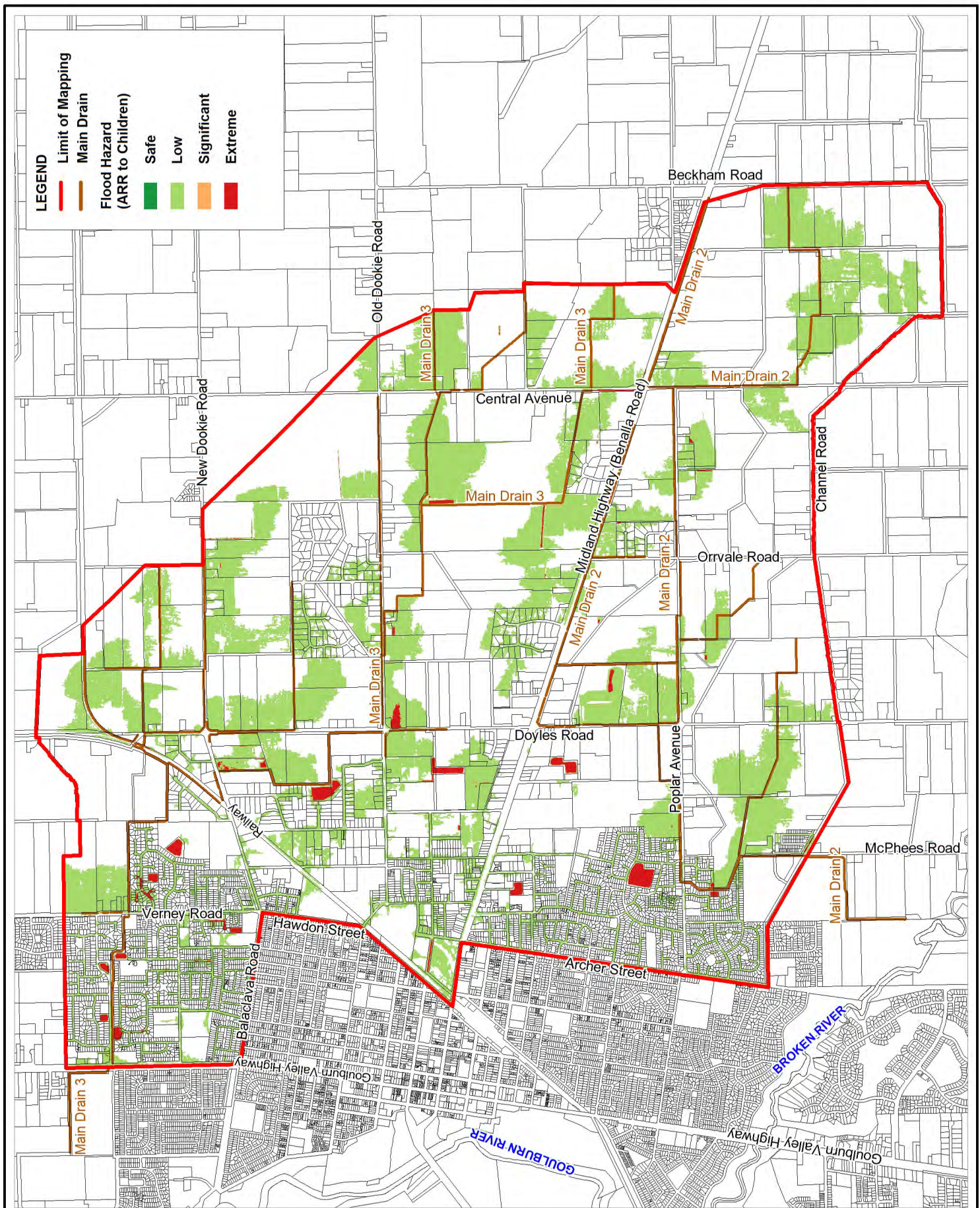
Rev:  
**A**

BMT WBM endeavours to ensure that the information provided in this map is correct at the time of publication. BMT WBM does not warrant, guarantee or make representations regarding the currency and accuracy of information contained in this map.



[www.bmtwbm.com.au](http://www.bmtwbm.com.au)





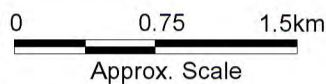
- LEGEND**
- Limit of Mapping
  - Main Drain
  - Flood Hazard (ARR to Children)
  - Safe
  - Low
  - Significant
  - Extreme

Title:  
**Shepparton East**  
**Developed Conditions 20% AEP Peak Flood Hazard**

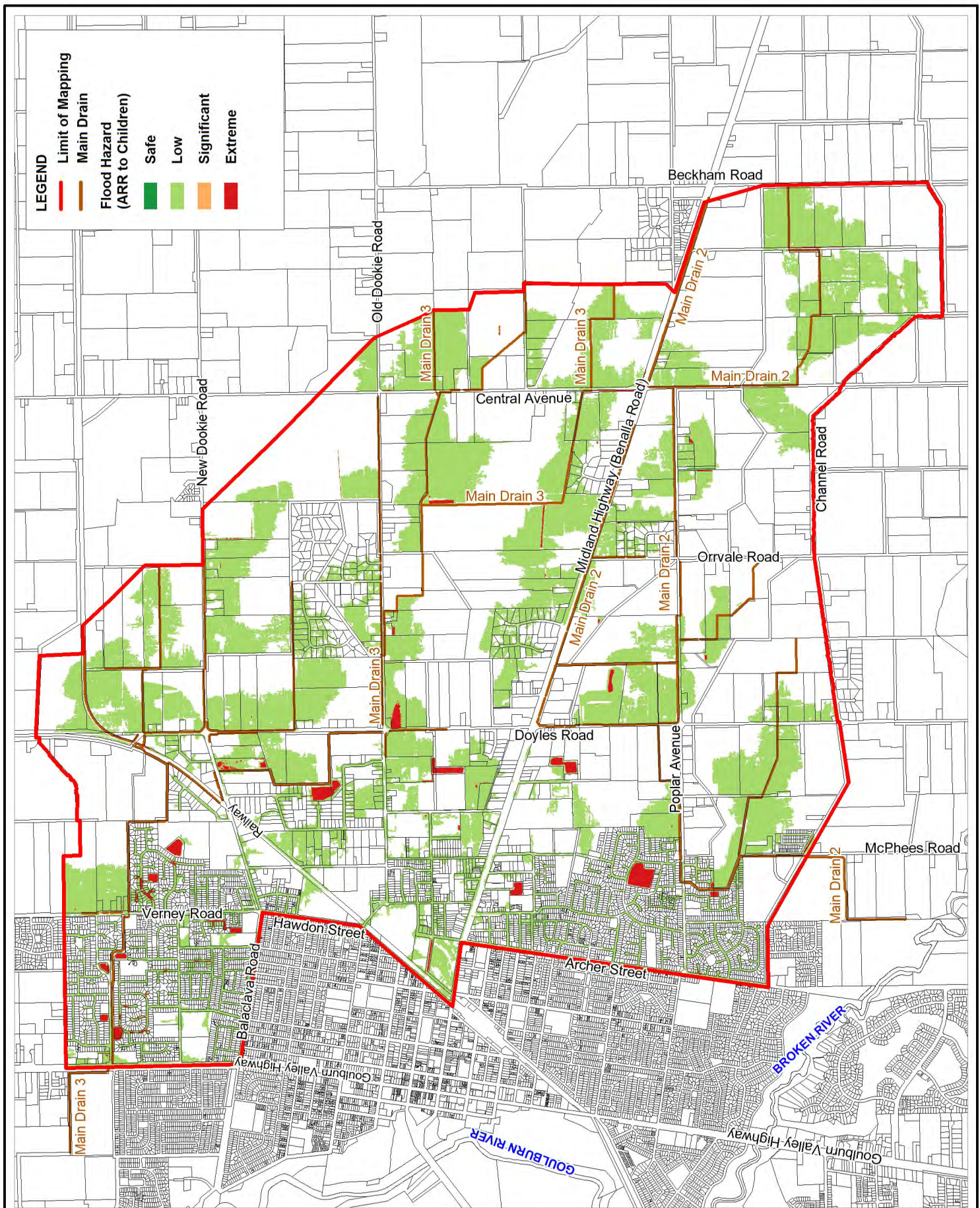
Figure:  
**G-8**

Rev:  
**A**

BMT WBM endeavours to ensure that the information provided in this map is correct at the time of publication. BMT WBM does not warrant, guarantee or make representations regarding the currency and accuracy of information contained in this map.



[www.bmtwbm.com.au](http://www.bmtwbm.com.au)



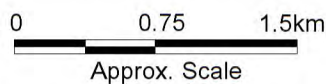
- LEGEND**
- Limit of Mapping
  - Main Drain
  - Flood Hazard (ARR to Children)
  - Safe
  - Low
  - Significant
  - Extreme

Title:  
**Shepparton East**  
**Developed Conditions 10% AEP Peak Flood Hazard**

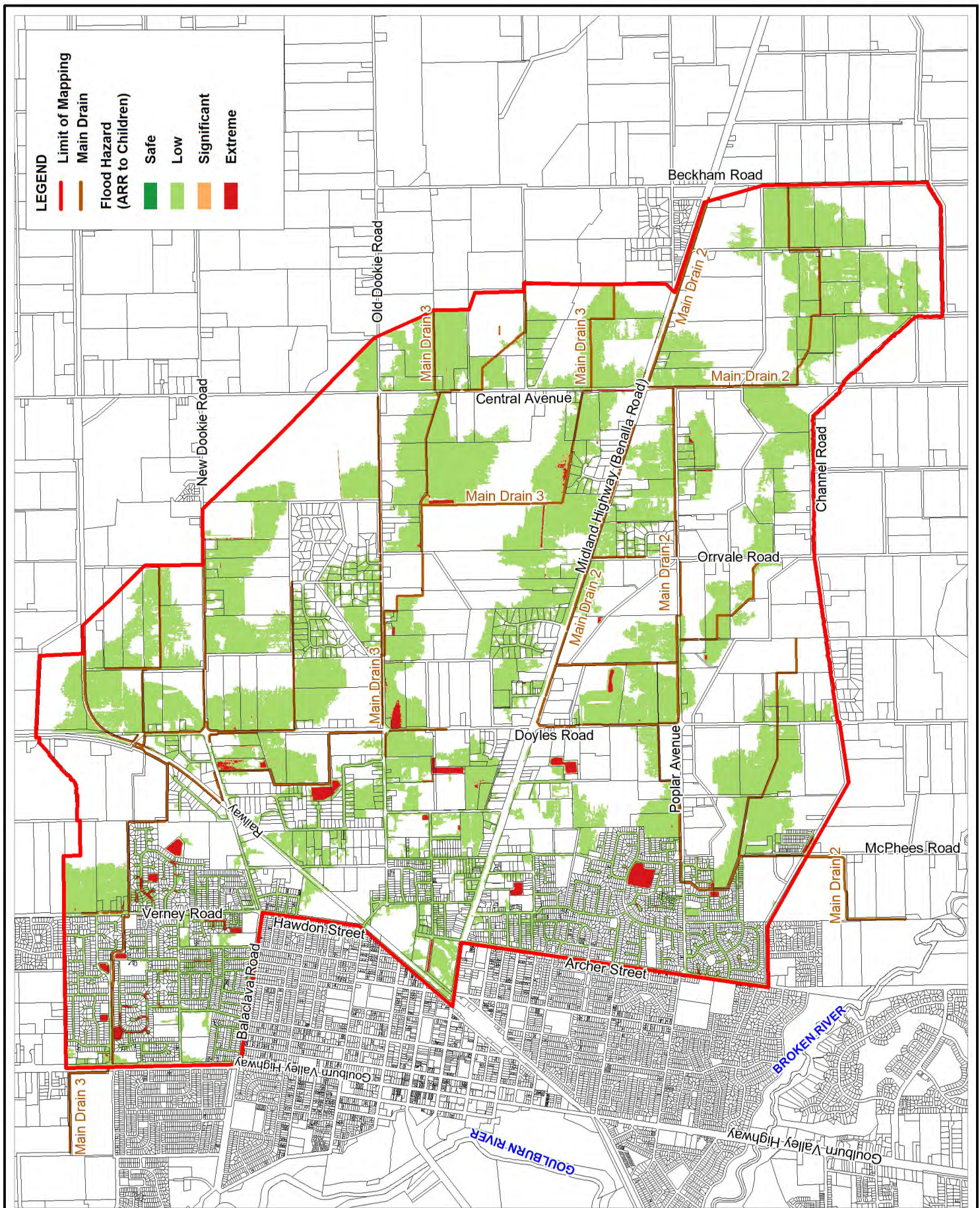
Figure:  
**G-9**

Rev:  
**A**

BMT WBM endeavours to ensure that the information provided in this map is correct at the time of publication. BMT WBM does not warrant, guarantee or make representations regarding the currency and accuracy of information contained in this map.



[www.bmtwbm.com.au](http://www.bmtwbm.com.au)

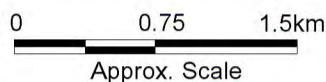


Title:  
**Shepparton East**  
**Developed Conditions 5% AEP Peak Flood Hazard**

Figure:  
**G-10**

Rev:  
**A**

BMT WBM endeavours to ensure that the information provided in this map is correct at the time of publication. BMT WBM does not warrant, guarantee or make representations regarding the currency and accuracy of information contained in this map.



www.bmtwbm.com.au